

# Using Dreamweaver MX to Upload Your Site

## Using Macromedia Dreamweaver® MX 2004 to Upload Your Web Site

This article briefly describes how to use Macromedia Dreamweaver MX 2004 to connect to your Web server and upload your Web site.

Macromedia Dreamweaver is a complete Web site development tool. Not only can you use Dreamweaver to create Web pages, you can also create “sites” that enable you to transfer files between your computer and your hosting account.

Visit <http://www.adobe.com> for more information about Dreamweaver.

## Getting Your FTP Settings

You will need to have your FTP settings on hand to use Dreamweaver to upload your Web site. This is the FTP information you will need to use Dreamweaver:

### FTP User Name

This is the user name for your hosting account.

### FTP Password

This is your password for your hosting account.

### Web Site URL

<http://www.coolexample.com>

### FTP Site URL

<ftp://coolexample.com>

### Start Directory

Leave the box blank or enter a single forward slash ( / ).

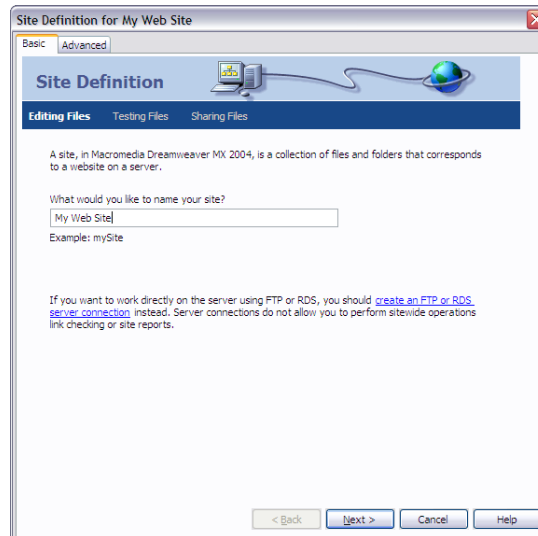
**NOTE:** If you are missing any of this information, you can log in to your Account Manager to find your user name, password, and URL.

## Defining a Site in Dreamweaver

To upload files to your Web site using Dreamweaver, you need to define a “site.” The easiest way to set up a site in Dreamweaver is to use the Site Definition Wizard.

### To Define Your Site Using the Site Definition Wizard

1. In Dreamweaver, from the **Site** menu, click **Manage Sites**.
2. Click **New**, and then click **Site**. The Site Definition wizard displays.
3. If necessary, click the **Basic** tab.
4. Enter a familiar name for your Web site, and then click **Next**. The name can be anything you want.
5. In the next screen of the wizard, select **No, I do not want to use a server technology**.
6. Click **Next**.



**NOTE:** If you already created a dynamic Web site and you're familiar with ASP.NET, PHP, JSP, or ColdFusion, you could select “Yes, I want to use a server technology” and work your way through the rest of the wizard. For more information on dynamic Web applications, please refer to your Dreamweaver documentation.

7. Select **Edit local copies on my machine, then upload to server when ready (recommended)**, and then locate and select the folder on your computer where you keep your Web site files. Click the folder to browse to your location.

8. Click **Next**.

9. From the **How do you connect list**, select **FTP**.

10. In the **What is the hostname** field, enter the URL (minus the “http” or “ftp”) of your Web site, for example: [coolexample.com](http://coolexample.com).

11. In the **What folder on the server do you want to store your files in?** field, enter the folder name.

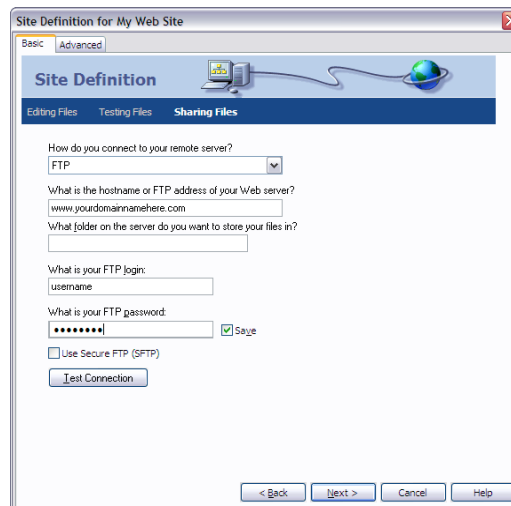
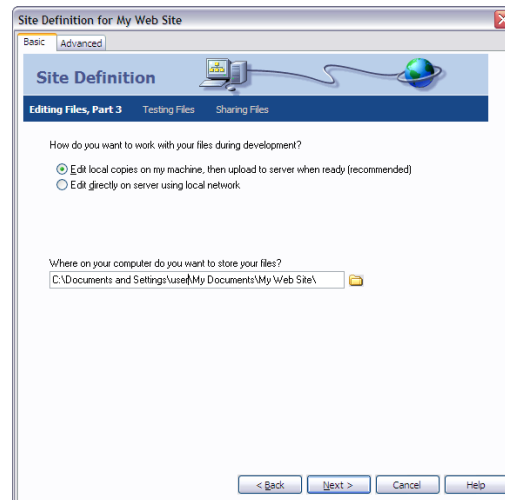
- For Windows shared hosting accounts enter **/username/** (replace 'username' with your hosting username)
- For Linux shared hosting accounts enter **/**

12. In the **What is your FTP login** and **What is your FTP password** fields, enter your FTP user name and password, and then click **Test Connection**.

13. Click **Next**. If your connection fails, check your URL, user name, and password. If you continue to have problems connecting, contact customer support.

14. Select **No, do not enable check in and check out**, and then click **Next**.

15. Review your settings and click **Done**.



## Uploading Pages to Your Web Site

After setting up your local and remote folders, you can upload your files from your local folder to the Web server. To make your pages accessible to the public, you must upload them.

### To Upload Pages to Your Web Site

1. From the Dreamweaver **Window** menu, click **Files**.
2. In the **Files** panel, select your site's local root folder (on your computer).
3. Click the blue **Put Files** arrow icon in the **Files** panel toolbar.

Dreamweaver copies all the files to the Web server you defined in the Site Definition Wizard.

Open your Web site in a browser to make sure everything uploaded correctly.