

# Using Microsoft Expression Web to Upload Your Site

## Using Microsoft Expression Web to Upload Your Web Site

This article briefly describes how to use Microsoft Expression Web to connect to your Web server and upload your Web site.

Microsoft Expression Web is a complete Web site development tool. Not only can you use Expression Web to create Web pages, you can also create “sites” that enable you to transfer files between your computer and your hosting account.

Visit <http://www.microsoft.com/expression/products/overview.aspx?key=web> for more information about Expression Web.

## Getting Your FTP Settings

You will need to have your FTP settings on hand to use Expression Web to upload your Web site. This is the FTP information you will need to use:

### FTP User Name

This is the user name for your hosting account.

### FTP Password

This is your password for your hosting account.

### Web Site URL

`http://www.coolexample.com`

### Remote Web Site Location

`ftp://coolexample.com`

### Root Directory

Leave the box blank or enter a subdirectory off of the root.

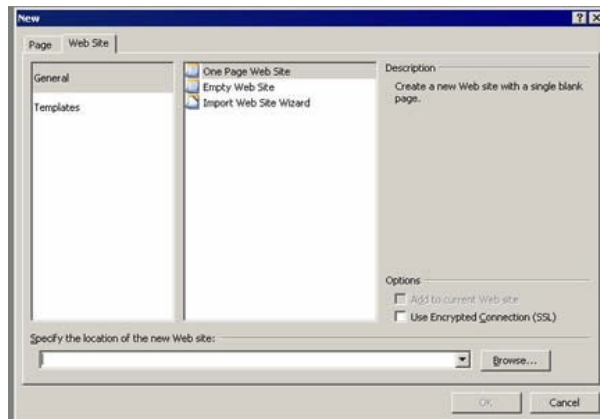
**NOTE:** If you are missing any of this information, you can log in to your Account Manager to find your user name, password, and URL.

## Creating a Site in Expression Web

To upload files to your Web site using Expression Web, you must first create a site, either from scratch or by importing an existing site.

### To Create Your Site From Scratch

1. In Expression Web, from the **File** menu, click **New --> Web Site**.
2. To create your site using an Expression Web template, click **Templates** and select the appropriate template. To create a non-templated site, click **General**. Selecting **One Page Web Site** creates a site with a single blank page. Selecting **Empty Web Site** creates a shell with no pages.



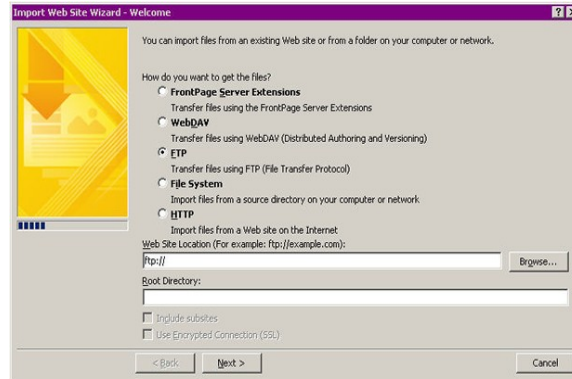
3. Enter the location of your Web site, and then click **Ok**.

### To Import an Existing Site

1. In Expression Web, from the **File** menu, click **New --> Web Site**.
2. To import an existing Web site into Expression Web, select **Import Web Site Wizard**. Enter the location of your Web site, and then click **Ok**.

- In the Import Web Site Wizard, select the source from which you are importing your Web site's files. If you want to download the files from an existing Web site to which you have FTP access, select **FTP** and enter the site location in the following format:

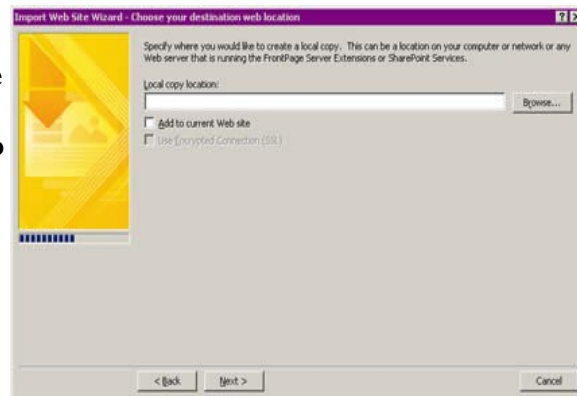
<ftp://coolexample.com>. You could also enter the IP address of your hosting server in the following format: <ftp://111.222.33.44>. Click **Next**.



- Enter your FTP user name and password, and then Click **Ok**.

- Enter the location to which the site files will be copied. If you are adding files to an existing Web site, select **Add to current Web site**. Click **Next**.

- Click **Finish**.

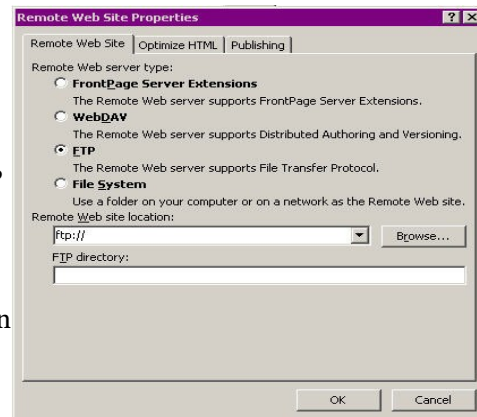


## Setting Up Your Remote Web Site

After setting up your local Web site, you need to establish a connection to your remote Web site.

### To Set Up Your Remote Web Site

1. From the Expression Web **Site** menu, click **Remote Web Site**.
2. Click **Remote Web Site Properties**.
3. Select the remote Web server type **FTP**. Enter the site location in the following format: <ftp://coolexample.com>. You could also enter the IP address of your hosting server in the following format: `ftp://111.222.33.44`.
4. If you will be publishing to a subdirectory, enter it in **FTP directory**.
5. Click **Ok**.



## Uploading Files to Your Web Site

After connecting to your remote Web site, you can upload files.

### To Upload Files to Your Web Site

1. From the Expression Web **File** menu, click **Publish Site**.
2. The Remote Web Site Properties windows appears with your remote Web site information. Click **Ok** to connect.

3. To publish individual pages to your remote Web site, select the pages and then click the **Right Arrow**. To publish your entire site, click **Publish Web Site**.
4. Preview your Web site in a browser to ensure changes have been published.

