



Getting Started Guide

Getting Started With Linux[®] Shared Hosting

Setting up and configuring your shared hosting account.

Getting Started with Linux Shared Hosting

Version 2.4 (12.03.07)

© Copyright 2007-2008. All rights reserved.

Distribution of this work or derivative of this work is prohibited unless prior written permission is obtained from the copyright holder.

Trademarks Used in This Book

Linux® is a registered trademark of Linus Torvalds.

Mac® is a registered trademark of Apple Computer, Inc.

Java™ is an unregistered trademark of Sun Microsystems, Inc.

DevGuru™ is a trademark of Infinite Software Solutions, Inc.

MySQL® is a registered trademark of MySQL AB in the United States, the European Union, and other countries.

W3Schools® is a registered trademark of Refsnes Data.

Webmonkey® is a registered trademark of Lycos, Inc. in the United States and other countries.

GoLive® and Macromedia Dreamweaver® are registered trademarks of Adobe Systems Incorporated.

Entourage®, FrontPage®, and Outlook® are registered trademarks of Microsoft Corporation in the United States and/or other countries.

Thunderbird™ is an unregistered trademark of the Mozilla Foundation.

All other trademarks and copyrights are the property of their respective owners.

Table of Contents

1	Introduction	iii
	Security Information	iii
	Creating a Strong Password	iv
	Getting Help	iv
	Other Resources	v
2	Setting Up Your New Hosting Account	1
	Setting Up Your Account	1
	Checking Your Hosting Account Status	3
	Setting Up Your Domain Name Servers (DNS)	4
	Getting Acquainted with the Hosting Control Center	5
3	Creating and Uploading a Web Page	7
	Creating Your First Web Page	7
	Where Can I Learn More About HTML?	8
	Uploading Your First Web Page	8
	Other FTP Clients For Your Web Site	11
	FTP Client Settings	12
	Troubleshooting	12
	Why am I Having Trouble Uploading Content?	12
	Why Isn't my Web Site Displaying Correctly?	13
4	Setting Up Email For Your Hosting Account	16
	Creating an Email Account	16
	Connecting To Your Email Account	19
	Accessing Your Account Using an Email Client	19
	Why Can't I Connect to my Email Account	19
	Accessing WebMail for Your Email Account	20
5	Accessing Your Web Site Statistics	22
	Enabling Web Statistics	22
	Accessing Your Web Site Statistics	23
	Resetting Your Web Statistics	24

6	Managing Domains and Sub Domains on Your Hosting Account	26
	Creating a Domain Alias	26
	Adding a Sub Domain to Your Hosting Account	27
	Adding Additional FTP User Accounts	29
7	Creating and Connecting to a Database	31
	Setting Up a MySQL database	31
	Finding Your Database Host Name	33
	Connecting To a Database	34

Introduction

Now that you've purchased your Linux shared hosting account, you're probably anxious to get started and set it up. But before you do, it's a good idea to find out what's going on under the hood. This guide assists you in getting your Web site up and running quickly. Along the way, we also pass on some general hosting information that you can use to impress your friends.

Your shared hosting account resides on a server along with other accounts. The server's resources are shared across these accounts, hence the term shared hosting. This is in contrast to dedicated hosting, which allows a single account to exclusively use one server. A major benefit to having a shared hosting account is that we take care of your server security, backup, and maintenance.

SECURITY INFORMATION

The most important security measure you can take is keeping your hosting account password secure. Anyone with access to your password can potentially manipulate the content on your site and compromise your account. If your password has been compromised, you can change it through the Hosting Control Center.

It may take up to thirty minutes for a change of password to take effect.

► To Change Your Hosting Account Password

1. Log in to your **Account Manager**.
2. Under the **My Products** section, select **Hosting Account List**.
3. Click **Open**, next to the hosting account you want to modify.
4. In the **Settings** section of the Hosting Control Center, click the **Account Login** icon.
5. To change your hosting account password, type a new password in the fields and click **Update**.

NOTE: The Hosting Control Center enforces criteria that ensure strong password creation.

CREATING A STRONG PASSWORD

The Hosting Control Center enforces rules that ensure your password cannot be easily hacked. To meet our security criteria, your password:

- Must contain between 7-14 characters.
- Must be made up of lowercase letters, uppercase letters, and numbers.
- Cannot begin with a number or symbol.
- Cannot contain backslashes, colons, single quotes, double quotes, spaces, or the caret symbol (^).
- Cannot contain your user name.

GETTING HELP

After your account is set up, you can find shared hosting help on the Web with our Hosting Resource Center, located within the Help Center.

► To Access the Help Center (Hosting Resource Center)

1. Log in to your **Account Manager**.
2. In your window's right-hand corner, click **Online Help**.



NOTE

The Help Center, which is a knowledge base with the most current shared hosting technical information, opens in a new window.

3. In the **Get Help - Select Your Product** section of the Help Center, click **Hosting & Servers** and select **Linux Hosting**.

The Hosting Control Center also provides context-sensitive help through question mark icons that appear beside select form fields. When clicked, these icons provide additional information and/or explanation.

You can also contact Customer Support directly for answers to your questions.

OTHER RESOURCES

You can use these resources to learn more about programming your shared hosting account:

Resource	URL
W3Schools®	http://www.w3schools.com/ A free repository of Web programming tutorials on topics from XHTML to PHP.
DevGuru™	http://www.devguru.com/ DevGuru is an exhaustive Web programming reference Web site.

1. Setting Up Your New Hosting Account

Some prep work is required to ready your account for uploading site content. First, you must set up your shared hosting account and specify its domain name servers (DNS).

Setting up your account installs the default hosting files and directory structure needed to upload content. Accurate domain name server information must be assigned to your account so visitors are directed to your site content.

To jump-start this whole process, you need to set up your hosting account.

SETTING UP YOUR ACCOUNT

Your account is not automatically set up when you purchase a hosting plan. You need to log in and complete the set-up process in the Hosting Control Center.

► To Set up Your Hosting Account

1. Log in to your **Account Manager**.



NOTE

The **Account Manager** is where you manage account administrative functions and hosting-related products such as email.

The **Hosting Control Center** is where you configure hosting account functionality.

2. Under the **My Products** section, select **Hosting Account List**.
3. Next to the hosting account you want to set up, click **Setup Account**.

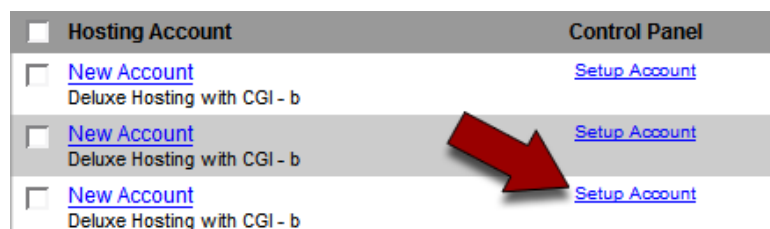


Fig. 1.1 - Set up Account link in your Account Manager.

- The **End User License Agreement** displays. Read the agreement, select the checkbox acknowledging that you have read and agree to it, and click **Next**.
- Enter a new user name and password for your hosting account, and confirm your password.



NOTE

This is the User ID and password that you use to connect to your hosting account with an FTP client. This is also the data you need to access your free Web Statistics.

1. [License](#)

2. **Login**

3. Account Details

4. Options

5. Addons

6. Confirmation

Login

Enter New User Name:

Enter Password:

Confirm Password:

[How To Generate a Strong Password](#)

Fig. 1.2 - Select a user name and password.

- Click **Next**.
- Enter your domain name, and then click **Next**.

1. [License](#)

2. [Login](#)

3. **Account Details**

4. Options

5. Addons

6. Confirmation

Account Details

Important Details:

Operating System: Linux
Bandwidth Allotment: 1,500,000 MB
Diskspace Allotment: 150,000 MB
of MySQL Databases: 25 Available

Enter Domain Below:

Fig. 1.3 - Select the domain you want to use with your hosting account.

- Update the default account options if necessary, and then click **Next**.

9. If you have a credit for an SSL certificate you want to add, select the appropriate certificate, select the checkbox acknowledging you have read and agree to the SSL Subscriber Agreement, and then click **Next**.
10. Confirm settings are correct. To update information, use the **Previous** button or click the appropriate
11. Click **Finish**.

Hosting account setup generally occurs in under 30 minutes but can require up to 24 hours. We'll send you an email with your account information when it is set up and ready to use.

CHECKING YOUR HOSTING ACCOUNT STATUS

You may have to wait up to 24 hours before you can upload files to your account (FTP), set up databases, or configure your Web site. The status for your hosting account displays on the Hosting Account List page in the Hosting Control Center.

► To Check the Status of Your Hosting Account

1. Log in to your **Account Manager**.
2. Under the **My Products** section, select **Hosting Account List**.
3. Click the name of the hosting account you want to check.

The Hosting Account Details window appears on the right. This section displays the current status of your hosting account. In general, these are the different types of account status that you'll see:

Status	Explanation
Initialize Account	You need to set up your hosting account in order to use it. To set up your hosting account, click the name of the account you want to set up.
Pending DNS	Your hosting account needs to match up with your domain name before you can upload files and manage your Web site. Depending on when you set up the name servers for your domain, it can take up to 8 hours for your hosting account to match up with .com and .net domains and up to 48 hours for other domain extensions.
Pending Account Change	This account status displays whenever you have upgraded or downgraded your hosting account.
Pending Setup	This account status displays after you have set up your account. It may take a few minutes for us to configure your hosting account before you can use it.

Status	Explanation
Setup	Your account is set up. You may still have to wait up to 48 hours before you can upload files to your account (FTP), set up databases, or configure your Web site.

Once your hosting account is set up, you can log in to the Hosting Control Center to manage your account, set up databases, and install various Web site features.

SETTING UP YOUR DOMAIN NAME SERVERS (DNS)

Name servers are the Internet's equivalent to phone books. A name server maintains a directory of domain names that match certain IP addresses (computers). The information from all the name servers across the Internet is gathered in a central registry.

This condition makes it possible for people across the Internet to access your Web site using a familiar domain name, instead of having to remember a series of numbers.

It usually takes 4-8 hours for .com and .net domains, and 24-48 hours for other domain extensions, before name servers on other networks are able to access the information after the central registry receives it. This period is referred to as the propagation period.

You can check if your name servers change has propagated by navigating to <http://www.internic.net/whois.html> and performing a Whois search on your domain name.

The process for setting up your name servers depends on the company from which you bought your domain. If your hosting account domain name was registered with us and resides in the same shopper account, its name servers will be changed automatically at the time hosting is set up. Otherwise, new name servers are required.

The default nameservers for your hosting account depend on the date you set up your hosting. Use this list to determine your default nameservers:

July 28, 2009 - Present

ns25.domaincontrol.com
ns26.domaincontrol.com

March 11, 2008 - July 27, 2009

ns51.domaincontrol.com
ns52.domaincontrol.com

September 19, 2007 - March 10, 2008

ns43.domaincontrol.com
ns44.domaincontrol.com

January 31, 2007 - September 18, 2007

ns5.secureserver.net
ns6.secureserver.net

November 15, 2006 - January 30, 2007

ns1.secureserver.net
ns2.secureserver.net

December 15, 2005 - November 14, 2006

ns3.secureserver.net
ns4.secureserver.net

Before December 14, 2005

ns1.secureserver.net
ns2.secureserver.net

OR

wsc1.jomax.net
wsc2.jomax.net

Check with your domain name registrar for specific instructions on how to change your name servers.

These name servers will point your domain name to your hosting account.



NOTE

Remember that it usually takes about 4-8 hours for .com and .net domains and about 24-48 hours for all other domain extensions before you can upload your Web site.

This period is referred to as the propagation period.

GETTING ACQUAINTED WITH THE HOSTING CONTROL CENTER

The Hosting Control Center is a control panel for your shared hosting account. It is the interface through which you manage account settings, content, databases, and Web statistics. The majority of non-administrative processes you perform on your account will

take place in the Hosting Control Center. You can manage hosting-related products such as email accounts through your Account Manager.

This is an example of what your Hosting Control Center looks like when you first log in:



The screenshot displays the Hosting Control Center home page. At the top, there is a green header with a dropdown arrow and the text "Account Summary". Below this, the account details are presented in a table-like format. The "Domain Name" is "coolexample.net". The "Server IP Address" is "172.16.16.38". The "SSL Status" is "Credit Available" with a blue shield icon. The "Operating System" is "Linux". The "Hosting Configuration" is "2.0" with a blue shield icon. The "PHP Version" is "PHP 4.x". The "Primary Domain DNS" is "View" with a blue link. On the right side, the "# of MySQL Databases" is "3 Setup of 50 Available", the "Bandwidth Allotment" is "2,000,000 MB", and the "Disk Space Allotment" is "200,000 MB". Below the account summary, there is a vertical navigation menu with the following items: "Settings", "Content", "Databases", "Statistics", and "Help", each with a right-pointing arrow.

Domain Name:	coolexample.net		
Server IP Address:	172.16.16.38	# of MySQL Databases:	3 Setup of 50 Available
SSL Status:	Credit Available 	Bandwidth Allotment:	2,000,000 MB
Operating System:	Linux	Disk Space Allotment:	200,000 MB
Hosting Configuration:	2.0 		
PHP Version:	PHP 4.x		
Primary Domain DNS:	View		

- ▶ Settings
- ▶ Content
- ▶ Databases
- ▶ Statistics
- ▶ Help

Fig. 1.4 - Your Hosting Control Center home page.

The Hosting Control Center is a graphical interface whose purpose is to facilitate the management of your hosting account. All of the procedures outlined in this guide, with the exception of uploading from a third-party FTP client, take place within the Hosting Control Center. The Hosting Control Center is also a source of current account status information. Error log, Web statistics, and language management interfaces are accessed from the Hosting Control Center.

2. Creating and Uploading a Web Page

The reason you purchased a shared hosting account to begin with is to see your original content out on the Web. The easiest way to accomplish this is by creating and uploading HTML/XHTML pages. In the sections that follow, we'll walk you through both processes.

CREATING YOUR FIRST WEB PAGE

To test your new hosting account, you can create a simple HTML page and upload it to your new Web server. One way to make Web pages is using a language called HTML. Once you upload this test file to your account and make sure that everything works, you can remove it and start creating your own Web site.

► To Create a Test HTML Web Page

1. Open a plain text editor. If you use Microsoft Windows, open Notepad (Start > All Programs > Accessories > Notepad). If you use an Apple computer, open TextEdit.
2. Type these lines of code (HTML) into your plain text editor:

```
<html >
<head>
<title>My New Web Site</title>
</head>
<body>
<h1>This is My New Web Site</h1>
<p>Hey! Welcome to my Web site. I wrote this code all by myself. Stay tuned. </p>
</body>
</html >
```

3. Save your file as **index.html** (all lowercase). Some editors try to save your file as "index.txt," but you should be able to override this by typing the file name when you save your HTML page. If not, you can manually rename your file after you save it.

WHERE CAN I LEARN MORE ABOUT HTML?

HTML (or XHTML) is the coding language used to create Web pages. Using HTML, you surround a block of text with codes that indicate how it should appear or what purpose it serves in a document.

Here are a few places on the Web where you can learn more about HTML:

- [W3 School's XHTML Tutorial](#)
- [Webmonkey's HTML Basics](#)

There are also a number of commercial tools available that help you create a Web site even if you don't know HTML. These are called WYSIWYG (pronounced whi-zee-wig) or What-You-See-Is-What-You-Get editors. Macromedia Dreamweaver® and Microsoft FrontPage® are two examples of WYSIWYG editors.

UPLOADING YOUR FIRST WEB PAGE

To upload files to your Web site, you need an FTP client. FTP stands for File Transfer Protocol. Using FTP, you can move files from your computer to your hosting account.

There are many free FTP clients available on the Internet that you can use to transfer your files. If you only need to upload a few simple files, you can also use the Web-based FTP client available in the Hosting Control Center.

► To Upload Your Web Page Using Your Hosting Control Center

1. Log in to your **Account Manager**.
2. Under the **My Products** section, select **Hosting Account List**.
3. Next to the hosting account you want to use, click **Open**. The Hosting Control Center opens.

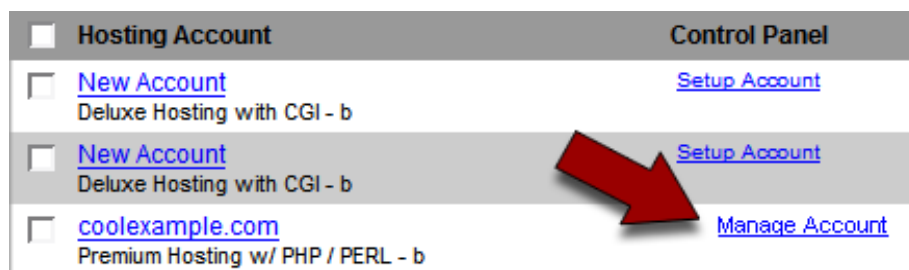


Fig. 2.1 - Open link in your Account Manager.

- Under the **Content** section of the Hosting Control Center, click the **FTP Client** icon.

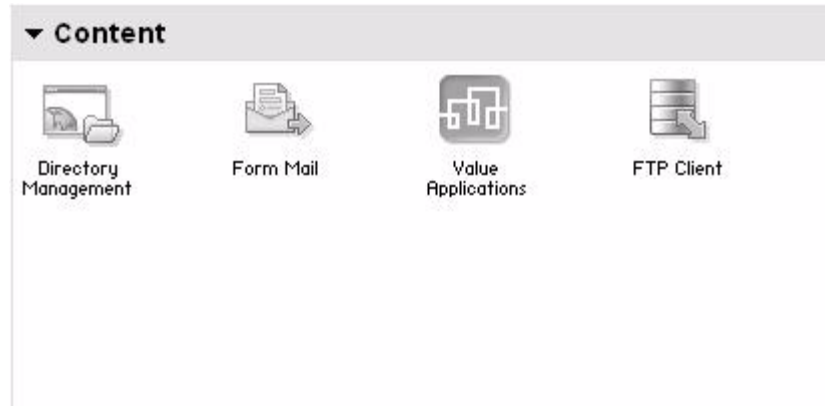


Fig. 2.2 - FTP Client icon in your Account Manager.

- If a security certificate window displays, click **Yes** or **Trust** to accept the certificate and open the FTP program. In general, this is what the FTP program looks like when you open it for the first time:

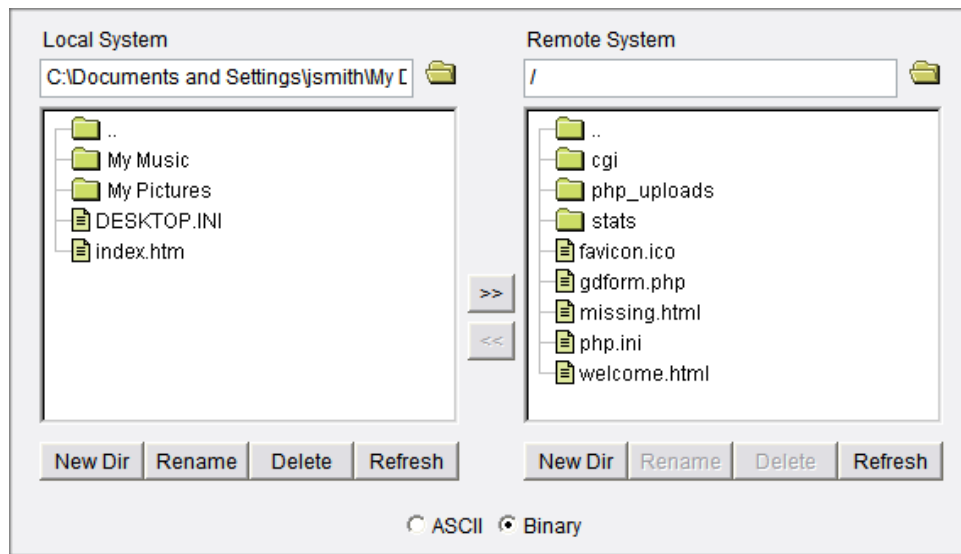


Fig. 2.3 - FTP client interface.

6. In the **Local System** section, go to the location on your computer where you saved your index.htm file and select your file.

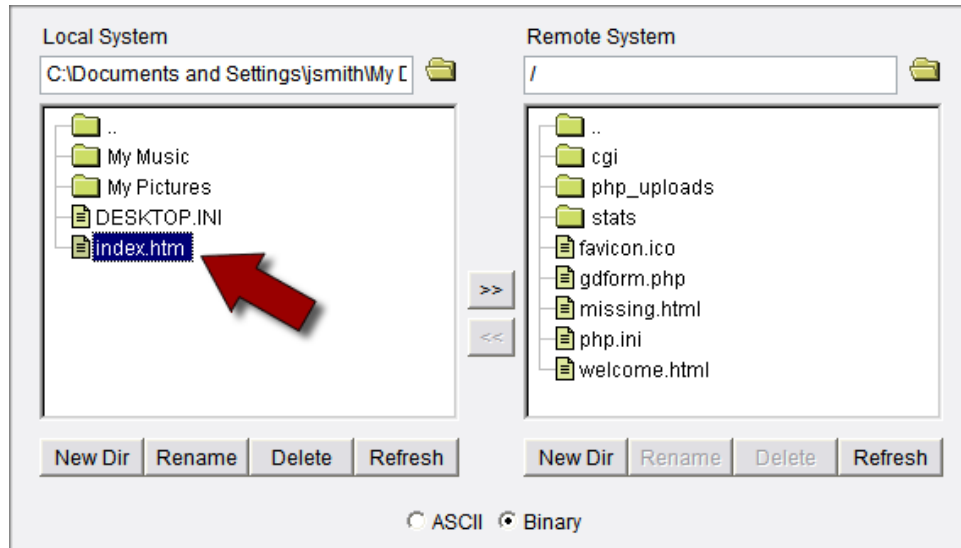


Fig. 2.4 - Select your file to upload.

7. Click the >> arrows to upload the index.htm file to your hosting account.

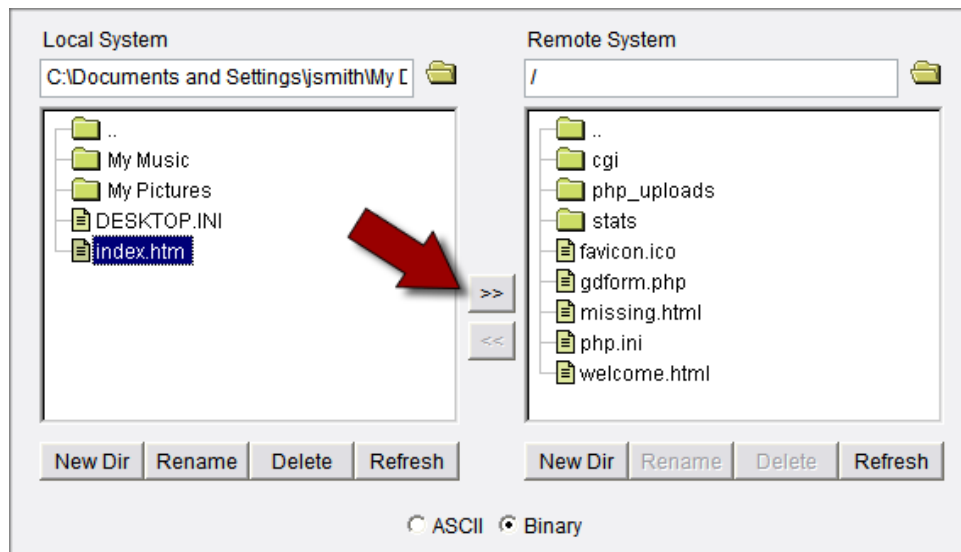


Fig. 2.5 - Upload selected file to hosting server.

After you upload your file, open a new Web Browser window and type the URL to your file in the address bar. Your URL should look like this:

```
http://www.coolexample.com/
```

Replace "coolexample.com" with your domain name.

You should now see a simple Web page with the phrases, "This is My New Web Site" and "Hey! Welcome to my Web site. I wrote this code all by myself. Stay tuned." If not, you may still need to wait for your hosting account to complete the setup process.

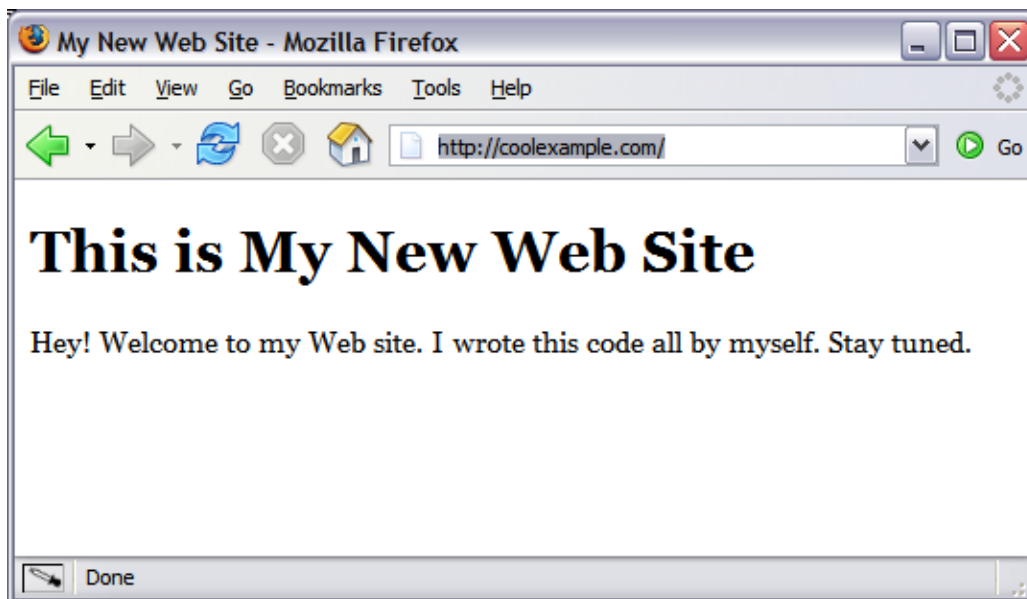


Fig. 2.6 - Index.html sample page display.

If you continue to have problems uploading your file, or you cannot see your index.html page, please contact customer support.

OTHER FTP CLIENTS FOR YOUR WEB SITE

While the FTP client that comes with your Hosting Manger is convenient, it is not designed for transferring large amounts of data. If you need to upload a large number of files, you should use a traditional FTP client.

These are some popular and inexpensive (some of them are free) FTP clients that you can download and use:

- [FileZilla \(Windows\)](#)
- [Smart FTP \(Windows\)](#)
- [Fetch \(Mac®\)](#)
- [gFTP \(Linux\)](#)

FTP Client Settings

After downloading and installing one of these clients, you can use it to connect to your hosting account. There are some basic settings that you need to know, regardless of the FTP client that you choose:

Setting	Explanation
FTP User Name	This is the user name for your hosting account.
FTP Password	This your password for your hosting account.
Web Site URL	<i>http://www.coolexample.com</i> Where “coolexample.com” is your domain name.
FTP Site URL	<i>ftp://www.coolexample.com</i> Where “coolexample.com” is your domain name.
Start Directory	Some FTP clients will ask for a “Home” or “Start” directory. Our hosting service does not require this. Simply leave the box blank or enter a single forward slash (i.e., /).

TROUBLESHOOTING

Sometimes you do all the preparations to get your Web site up and running, and something just doesn't work. We have identified some of the most common pitfalls, or problems, that you may experience. This section presents important information and recommended solutions for fixing these problems.

Why am I Having Trouble Uploading Content?

If you are having trouble uploading your site content, there are a couple of things you can check to make sure your files end up in the right place.

► Use the correct password for uploading files

Use your hosting account password to upload files. You can change your password through the Hosting Control Center.

To Change Your Hosting Account Password

1. Log in to your **Account Manager**.
2. Under the **My Products** section, select **Hosting Account List**.
3. Next to the hosting account you want to modify, click **Open**.
4. Under the Settings section of the Hosting Control Center, click the **Account Login** icon.
5. To change your hosting account password, type a new password in the fields and click **Update**.

► Verify your upload directory

You must upload files to the appropriate directory in order for your Web site content to show up. Depending on your FTP client, you may be asked for a "home" or "start" directory. Our hosting service doesn't require this, so leave that field blank. If your client requires a value, enter a single forward slash (i.e., /).

Why Isn't my Web Site Displaying Correctly?

Even though you set up your hosting and uploaded your files, it's possible your Web site still won't display. There is no need to fret. The following issues can be potential show-stoppers, so check each item to verify that your settings are correct.

► Verify your home page file name

When someone types your domain name into a Web browser, the default home page should display. This page must have a name that is supported by our hosting servers. Use one of the following names:

default.html	default.htm	index.aspx
index.htm	index.html	index.jsp
index.php	index.shtml	home.htm
home.html	welcome.html	welcome.htm

► Solve image problems

Typically, there are two reasons why images might not display properly. Either your image was not uploaded to your Web server or the path to the image is incorrect. Check these two things to make sure the image is uploaded correctly.

1. Double-check that the path to your image and the name of the image are the same, including the use of uppercase and lowercase letters. If these names are not identical, the server cannot find your image.
2. When the server cannot find an image, a red X displays. Right-click on the red X and select properties to see the link to the image.

► Correct broken site links

If you create your Web site pages on your local computer, your code needs to adjust for the change that occurs when you upload site content. Web page URLs, image paths, and database names can all be environment-sensitive.

We recommend that you use relative URLs when linking to Web pages. Relative URLs identify a Web page in relation to, or in the context of, the current page. Because they do not reference the domain name, relative URLs do not require modifications when changing environments.

► Ensure your DNS is pointed correctly

If you registered your domain through us, your DNS records were automatically updated when you set up your hosting account. If you registered your domain name somewhere else, double-check that the names servers you used are the following:

Accounts Set up After March 11, 2008

ns51.domaincontrol.com
ns52.domaincontrol.com

Accounts Set up September 19, 2007 - March 10, 2008

ns43.domaincontrol.com
ns44.domaincontrol.com

Accounts Set up January 31, 2007 - September 18, 2007

ns5.secureserver.net
ns6.secureserver.net

Accounts Set up November 15, 2006 - January 30, 2007

ns1.secureserver.net
ns2.secureserver.net

Accounts Set up December 15, 2005 - November 14, 2006

ns3.secureserver.net
ns4.secureserver.net

Accounts Set up Before December 14, 2005

ns1.secureserver.net

ns2.secureserver.net

OR

wsc1.jomax.net

wsc2.jomax.net

Check with your domain name registrar for specific instructions on how to change your name servers.

► Refresh your Web browser

Browsers can cache Web pages. To clear the cache and refresh your page, press CTRL + F5 for Internet Explorer. For Firefox, press CTRL + R.

3. Setting Up Email For Your Hosting Account

All our hosting plans include a number of free email accounts you can set up to incorporate your domain name. For example, if Jane Smith started an online business named "coolexample.com," she can create an email account with the address "jane@coolexample.com." This address is personal, memorable, and slick.

Now that Jane Smith has her email address, let's create yours.

CREATING AN EMAIL ACCOUNT

Your new email account should be ready to use within 15 minutes of setup.

► To Create a New Email Account using the Email Control Center

1. Log in to your **Account Manager**.
2. Under the **My Products** section, click **Email/Email Forwarding**.
3. Next to the account you want to use, click **Manage Account**. The **Email Control Center** will display. If a pop-up window appears, click **Add Address**.
4. Click the **Add Email Address** link on the right side of the window below the **Buy More SMTP Relays** button.

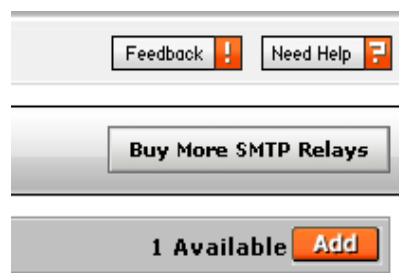


Fig. 3.1 - Add Email Address link in the Email Control Center.

- In the **Add Email** area, select whether you're using a domain registered or hosted with us or one registered or hosted elsewhere, then in the **Email Address** field, enter the first part of the email address that you want to create and specify the domain.

Fig. 3.2 - Add Email area in the Email Control Center.

- In the **Password** and **Confirm Password** fields, enter your password.

Fig. 3.3 - Enter your password.

- To send a carbon copy of all email messages sent to this account to another account, in the **Send Carbon Copies To** field, type the email address(es) to which you would like to send copies

Fig. 3.4 - Enter carbon copy address.

- Specify the space you would like to allow for this account. Note the total space available and that you've used so far. You can increase or decrease this amount at any time.

9. Specify if you want this account to be a **Catch-All Account**. A Catch-All Account is an email account that you can use to gather any emails sent to your domain name that don't have legitimate email addresses.

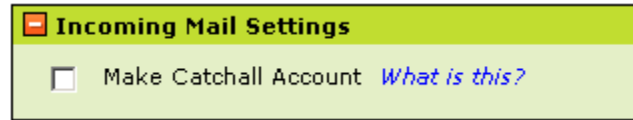


Fig. 3.5 - Incoming mail settings.

10. Select the number of relays you want to send per day from the **Relays per Day** list. If you will be using an email client, such as Outlook®, Thunderbird™, or Entourage®, to send outgoing email through this account, you need to relay those messages through our servers. All email accounts come with the capability of sending up to 250 email messages per day through SMTP Relay.

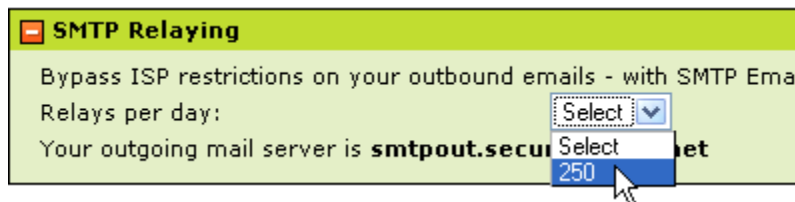


Fig. 3.6 - SMTP Relaying settings.

11. If you would like a message to be automatically sent to people when they send you email, select the **Auto-Responder** checkbox and enter the response in the **Auto-Responder** message field. If you would like to use a custom name or message subject, enter them in the **Custom Responder Properties** fields. If you would like to set specific start and end dates for your message, enter them in the Start Time and End Time area.

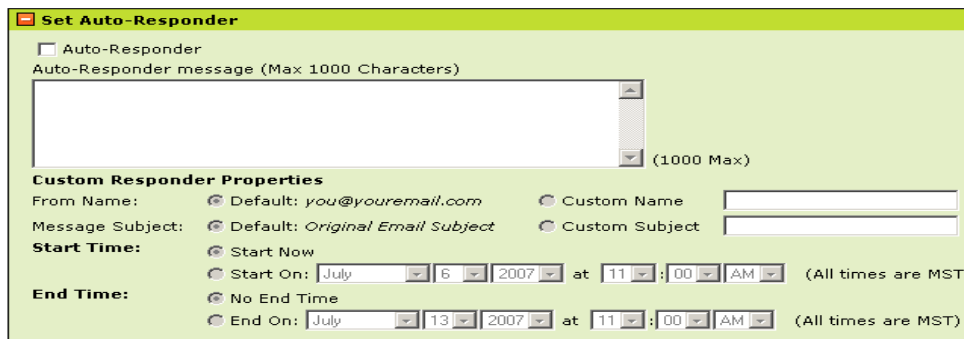


Fig. 3.7 - Auto-Responder Properties.

12. Click **OK**.

CONNECTING TO YOUR EMAIL ACCOUNT

Accessing Your Account Using an Email Client

To access your email account using an email client, such as Outlook®, Thunderbird™, or Entourage®, you need the following information:

Client Settings for Your Hosting Account Email	
User Name	The name of the email account you created, for example <code>jane@coolexample.com</code> .
Password	The password you specified when you set up your email account.
POP3 Setting	<code>mail.coolexample.com</code> Where <code>coolexample.com</code> is your domain name.
SMTP Setting	<code>smtpout.secureserver.net</code> The outgoing (SMTP) server requires authentication and uses the same user name and password as the incoming (POP3) server. <code>smtpout.secureserver.net</code> uses port 25 by default. It may also use ports 80 or 3535 .

For more information about setting up mail accounts, please visit the support section of our Web site.

Why Can't I Connect to my Email Account

After you've set up your email account, there are a few things that might prevent you from connecting. Each of these potential pitfalls or problems can be fixed by adjusting your settings.

► Check your SMTP settings

If you will be using an email client, such as Outlook®, Thunderbird™, or Entourage®, to send outgoing email through this account, you need to relay those messages through our servers. All email accounts come with the capability of sending up to 250 email messages per day through SMTP Relay. You can purchase additional SMTP relays to increase your message limit. When you purchase SMTP relay accounts, you can apply the relays to any of your email addresses. If you are having trouble connecting to your email account, first make sure you have set up SMTP Relay in your email account.

To Set Up SMTP Relay for New Email Accounts

1. Log in to your **Account Manager**.
2. Under the **My Products** section, click **Email/Email Forwarding**.
3. Next to the account you want to use, click **Manage Account**. If you receive a pop-up window, click **View All**. The **Email Control Center** will display.
4. Locate the account you want to set up and click that account name (for example, jane@coolexample.com). The **Edit Email** page displays.
5. In the **SMTP Relaying** section, select the number of relays per day you want to use for the account.
6. Click **OK** at the bottom of the page.

▶ Check your SMTP outgoing mail server name

On your computer, make sure the name of the outgoing mail server used for SMTP relaying is:

smtpout.secureserver.net.

▶ Check your port settings

The SMTP relay service is configured to work with the following ports: Port 25, Port 80, and Port 3535. For most email systems, the default port is 25 and your email client uses this automatically. If your ISP has a firewall that prevents relays from using port 25, you may need to change your port settings to 80 or 3535.

▶ Check your message size

Check the size of your message. The maximum message size for our SMTP service is 25MB. The message size limit for SMTP service for most ISP's is much, much smaller, usually 5 or 6 MB.

▶ Check your relay definition

Make sure you haven't exceeded your daily relay limit. One relay consists of one email message sent to each person using the SMTP service. So if you send one email message to 30 people, it counts as 30 relays. Relays are counted on a daily basis and your daily allotment is reset each night at midnight.

Accessing WebMail for Your Email Account

Instead of accessing your email using a traditional email client, you can access your email on the Web using a standard Web browser.

To access your email account using a Web browser, go to the following Web address:

```
http://email.coolexample.com
```

Where *coolexample.com* is the name of your domain.

Sign in to your account using the email address and password you set up in your account manager.

For example, to access Webmail for the domain that we set up in this guide, you would go to <http://email.coolexample.com/>. To sign in, you would use the email address for the account you want to access, jane@coolexample.com.

4. Accessing Your Web Site Statistics

The only thing more exciting than putting up a Web site is seeing that people actually visit it. Knowing your audience can help you better tailor your site to their behavior. It just so happens that all shared hosting accounts come with built-in Web statistics.

ENABLING WEB STATISTICS

Your Web statistics are disabled by default, so you need to enable them to start collecting information about the visitors to your Web site. Enable your Web statistics using the Hosting Control Center.

► To Start Collecting Statistics for Your Web Site

1. Log in to your **Account Manager**.
2. Under the **My Products** section, select **Hosting Account List**.
3. Next to the hosting account you want to modify, click **Open**.

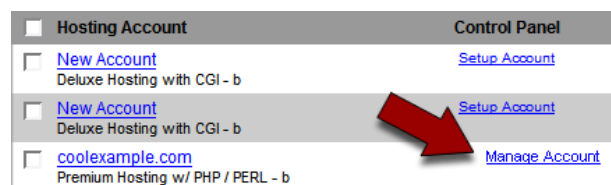


Fig. 4.1 - Open link in your Account Manager.

4. Under the **Statistics** section of the Hosting Control Center, click the **Configure Web Statistics** icon.



Fig. 4.2 - Configure Web Statistics icon in Hosting Control Center.

5. Select the **Enable Web Statistics** checkbox.



Fig. 4.3 - Enabling hosting account Web statistics.

6. The enabling process will begin automatically. It may take up to 30 minutes to take effect in your account.

After enabling Web statistics for your site, it may take up to **24 hours** for the collection of data to begin.

ACCESSING YOUR WEB SITE STATISTICS

To access the statistics for your Web site, type the following URL into your Web browser:

```
http://www.coolexample.com/stats
```

Replace "coolexample.com" with the name of your domain.

The user ID and password for your statistics page is the same as the user ID and password for your hosting account, unless you have changed it in the Hosting Control Center.

RESETTING YOUR WEB STATISTICS

It is possible that after you've collected a lot of data about the visitors to your site, you want to start over again at zero. Perhaps you've recently changed the business focus on your site, or you've just finished a redesign. You can reset your Web statistics any time using the Hosting Control Center.

► To Reset Your Web Site Statistics

1. Log in to your Account Manager.
2. Under the **My Products** section, select **Hosting Account List**.
3. Next to the hosting account you want to modify, click **Open**.

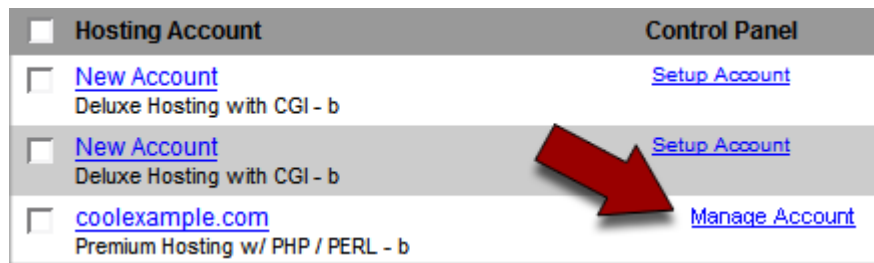


Fig. 4.4 - Open link in your Account Manager.

4. Under the **Web Statistics** section of the Hosting Control Center, click the **Configure Web Statistics** icon.



Fig. 4.5 - Configure Web Statistics icon in your Hosting Control Center.

5. Select the **Reset Web site Statistics** checkbox.

The screenshot shows a web interface for resetting statistics. It is divided into several sections:

- Web Statistics Password Reset**: A header section with a link: "If you have forgotten your web site statistics password, click [here](#) to have this information sent to you via email."
- Enable/Disable Site Statistics**: A section with a checkbox labeled "Web Statistics" and "Disable Web Statistics".
- Reset Website Statistics [Optional]**: A section with a checkbox labeled "Web Statistics" and "Reset Website Statistics".
- Modify Statistics Username/Password [Optional]**: A section with three input fields:
 - "Enter New User Name" with the text "everlastingold".
 - "Enter New Password" (empty).
 - "Confirm New Password" (empty).

At the bottom right, there are two buttons: "Continue" and "Cancel".

Fig. 4.6 - Resetting Web statistics in your Hosting Control Center.

6. Click **Continue** and then click **Submit**.

5. Managing Domains and Sub Domains on Your Hosting Account

With Linux shared hosting accounts, you can leverage your hard work and existing hosted Web site content through the use of alias and sub domains.

Aliasing allows you to assign multiple domain names to one of your hosting accounts. When users navigate to the alias domain, they see the hosting account's content. Subdomains provide an easy way for users to navigate directly to a content sub directory on your hosting account.

CREATING A DOMAIN ALIAS

Aliasing allows you to point more than one domain name to existing hosting account content. For example, if you have the domain name "anotherexample.com" set up as an alias to the hosting account for "example.com," users browsing to "anotherexample.com" see the content located at "example.com."

Note: Depending on your hosting plan (Economy, Deluxe, or Premium), you are not limited to pointing an alias domain at the root of your hosting account. Deluxe and Premium plans can point an alias domain to any hosting content directory. Economy hosting plans allow you to only point an alias domain at the root of your hosting account.

► To Add a Domain Alias

1. Log in to your **Account Manager**.
2. Under the **My Products** section, select **Hosting Account List**.
3. Next to the hosting account you want to modify, click **Open**.

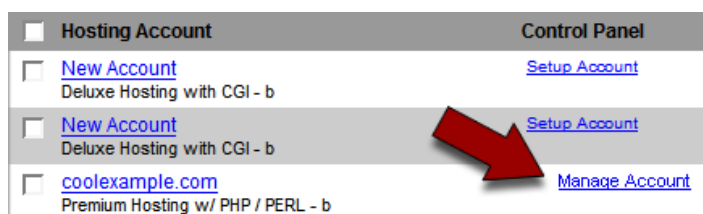


Fig. 5.1 - Open link in your Account Manager.

- Under the **Settings** section of the Hosting Control Center, click the **Domain Management** icon.

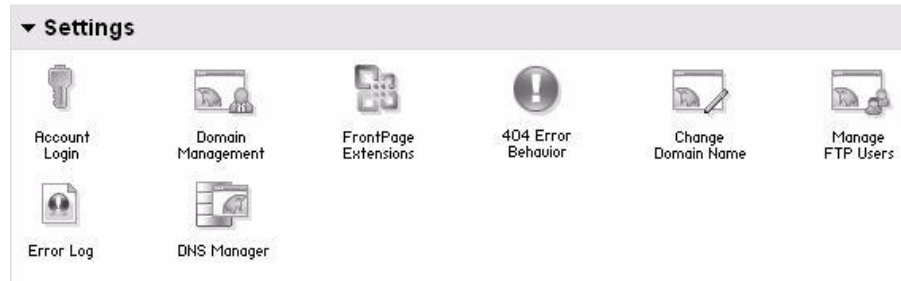


Fig. 5.2 - Domain Management icon in your Hosting Control Center.

- From the **Domain** drop-down list, select a domain in your shopper account or type a domain name that does not exist in your account.

Fig. 5.3 - Specify the domain to alias.

- From the **Domain Hosting Path** drop-down list, select an existing content directory or type a new content directory that does not appear in the list.



.TIP-

You can only create a Domain Hosting Path on our **Deluxe** and **Premium** hosting plans.

Using a Domain Hosting Path, you can host multiple domains with one hosting plan. In the previous example, the content for the domain "coolexample.net," will be hosted in the "new_directory" folder on your primary hosting account.

- Click **Add Domain**.

It can take 4–8 hours for .com and .net domains and 24–48 hours for all other domain extensions to become aliased.

ADDING A SUB DOMAIN TO YOUR HOSTING ACCOUNT

A sub domain is an easy way to create a memorable Web address for various areas of your site. For example, you could create a sub domain for pictures on your site called "pics." Anybody that comes to your Web site could type pics.example.com instead of www.example.com/pics.

There is no limit to the number of subdirectories you can use, but the path can be no more than 70 characters.

► **To Add a Sub Domain to Your Hosting Account**

1. Log in to your **Account Manager**.
2. Under the **My Products** section, select **Hosting Account List**.
3. Next to the hosting account you want to modify, click **Open**.

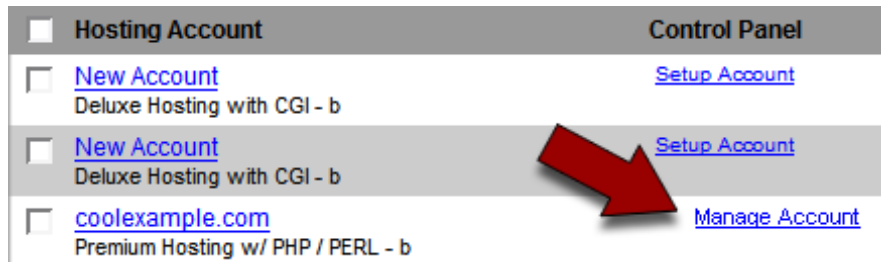


Fig. 5.4 - Open link in your Account Manager.

4. Under the **Settings** section of the Hosting Control Center, click the **Domain Management** icon.

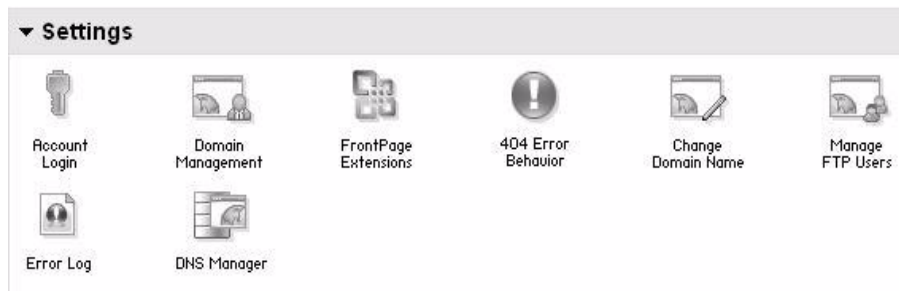


Fig. 5.5 - Domain Management icon in your Hosting Control Center.

5. Expand the appropriate domain name panel, and then click **Add Sub Domain**.

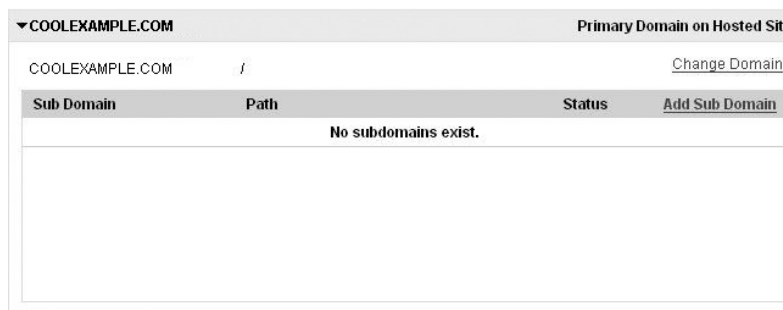


Fig. 5.6 - Add Sub Domain link.

- In the **Sub Domain** text box, enter the sub domain that you want to use. In this example, we'll create a sub domain called "newdirectory."

Sub Domain	Path	Status	Add Sub Domain
<input type="text"/>	< same as sub domain >	<input type="checkbox"/>	<input type="button" value="Save"/> <input type="button" value="Cancel"/>

Fig. 5.7 - Specify the sub domain site directory.

- In the **Path** drop-down list, leave **<same as sub domain>**. This will create a new directory in your hosting account with the same name as your sub domain. In this example, the hosting manager will create a directory called "newdirectory."
- Click **Save**.

It may take a few minutes for the Hosting Control Center to set up your sub domain. Once this occurs, you can upload a test HTML file to your new sub directory and navigate to either location below to verify content:

`http://www.cool example.com/newdi rectory`

`http://newdi rectory.cool example.com`

Where "cool example.com" is your domain name and "newdirectory" is the name of the sub domain you created.

ADDING ADDITIONAL FTP USER ACCOUNTS

Additional FTP accounts make it possible for you to create users that can upload and manage files in other directories and sub domains on your hosting account.

► To Add an FTP User to Your Hosting Account

- Log in to your **Account Manager**.
- Under the **My Products** section, select **Hosting Account List**.
- Next to the hosting account you want to modify, click **Open**.
- Under the **Settings** section in your Hosting Control Center, click **Manage FTP Users**.
- Click **Add FTP User**.
- Enter the **User Name** and **Password** for the new FTP account.

7. Select the **Path** to use for this FTP user. There are three primary options:
 - Type in the subdirectory you want to use.
 - Use the root level directory (access to your entire hosting account).
 - Create a new directory using the new FTP user name.
8. Click **Save**.

6. Creating and Connecting to a Database

If your hosted Web site contains dynamic content or has data-driven, third-party applications installed, it needs a database to store information. Our Linux hosting accounts come with an easy-to-use interface for setting up MySQL® databases.

If you are a more experienced Web developer or just plain feel lucky, you can also use PHPMyAdmin to manage and set up databases for your hosting account.

SETTING UP A MYSQL DATABASE

MySQL is a fast, flexible database that most third-party applications support.

► To Set Up a MySQL Database for Your Web Site

1. Log in to your **Account Manager**.
2. Under the **My Products** section, select **Hosting Account List**.
3. Next to the hosting account you want to modify, click **Open**.

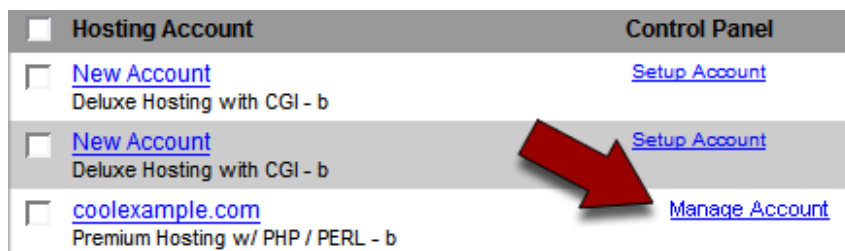


Fig. 6.1 - Open link in your Account Manager.

4. Under the **Databases** section of the Hosting Control Center, click the **MySQL** icon.



Fig. 6.2 - MySQL icon in your Hosting Control Center.

5. Click **Create New Database**.

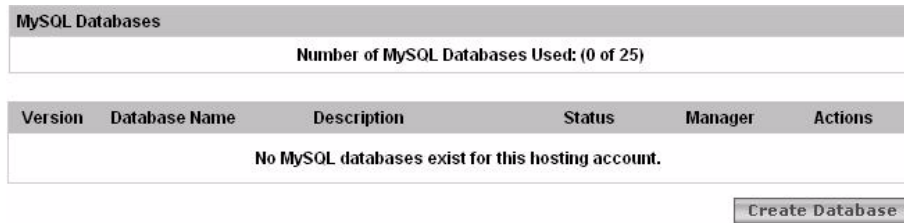


Fig. 6.3 - Create New Database.

6. Select which version of MySQL you want to use and enter a **User Name** and **Password** for your database. You will use this user name and password to connect to your database. The user name that you create here is also the name of your database.

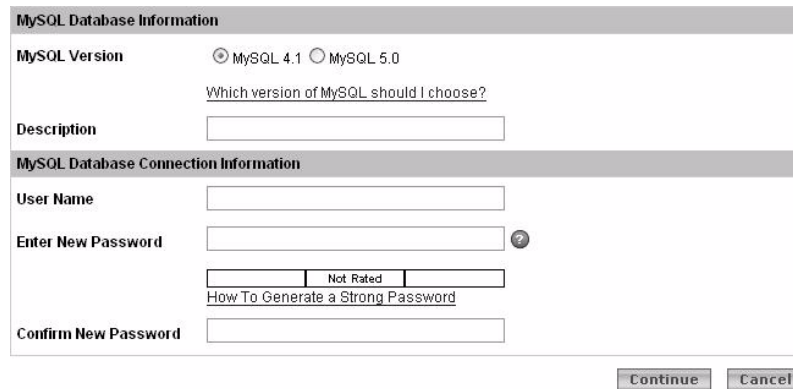


Fig. 6.4 - Enter your database user name and password.

7. Click **Continue**.
8. Verify your MySQL database settings. If everything looks okay, click **Create Database**.



Fig. 6.5 - Click Create Database.

It may take a few minutes to create your database. You can click the Refresh button in your browser to check and see if your database is ready.

Once you have set up a database for your account, you can click the **Pencil** icon next to the name of your database to find your host name information.

To access more advanced management functions (phpMyAdmin), click **Open Manager** next to the database you want to configure.

FINDING YOUR DATABASE HOST NAME

Our hosting accounts do not use "localhost" for their host name. Once you have created a MySQL database, your host name displays on the database information page of your Hosting Control Center.

► To Find the Host Name for Your MySQL Database

1. Log in to your **Account Manager**.
2. Under the **My Products** section, select **Hosting Account List**.
3. Next to the hosting account you want to modify, click **Open**.

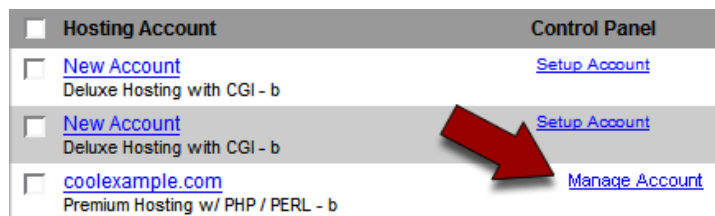




Fig. 6.6 - Open link in your Account Manager.

4. Under the **Databases** section of the Hosting Control Center, click the **MySQL** icon.



Fig. 6.7 - MySQL icon in your Hosting Control Center.

5. From your list of databases, click the **Pencil** icon next to the appropriate database.

MySQL Databases					
Number of MySQL Databases Used: (1 of 25)					
Version	Database Name	Description	Status	Manager	Actions
4.1	everlastinggold	database	Setup	Open Manager	 

[Create Database](#)

Fig. 6.8 - Pencil icon in your Hosting Control Center.

6. The **Database Information** page displays. The host name for your database displays in this area.

MySQL Database Information

Host Name: p41mysql15.secureserver.net

Database Name: coolexample

Database Version: 4.1

Description: database

Modify Description:

MySQL Database Connection Information

User Name: coolexample

Select Update Option: Update Password

Enter New Password: ?

Not Rated

[How To Generate a Strong Password](#)

Confirm New Password:

Continue Cancel

Fig. 6.9 - Database host name.

CONNECTING TO A DATABASE

Once you know the host name, database name, user name, and password for your database, you can connect to it using code (PHP, ColdFusion, Perl) or the configuration file for your Web application. You need this general information to connect to your database:

Setting	Explanation
Host name	You can find the host name for your database on the database information page in your Hosting Control Center. Do not use localhost.
User Name	The user name you chose when you created your database.
Database Name	This is the same as your user name.
Password	The password you chose when you created your database.

This is an example of PHP code that connects to a MySQL database. This script connects to a database, queries a specified table, and prints the contents.

Notice the **//Connect to Database** section that contains all of the information you need to connect to a database.

```
<?php
//Sample Database Connection Syntax for PHP and MySQL.

//Connect To Database
$hostname="mysql.secureserver.net";
$username="your_dbusername";
$password="your_dbpassword";
$dbname="your_dbusername";
$usertablename="your_table";
$yourfield = "your_field";
mysql_connect($hostname, $username, $password);
mysql_select_db($dbname);

# Check If Record Exists

$query = "SELECT * FROM $usertablename";

$result = mysql_query($query);

if($result)
{
while($row = mysql_fetch_array($result))
{
$name = $row["$yourfield"];
echo "Name: ". $name. "
";
}
}
?>
```

For more information about MySQL and connecting to a MySQL database, visit the official MySQL Web site at: <http://www.mysql.com/>.